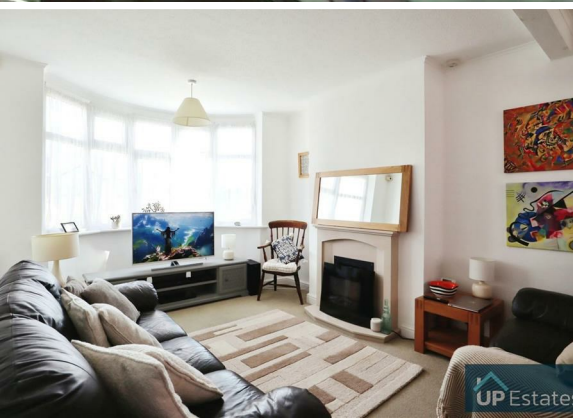




3 Bed  
House - Terraced  
located on Crossway  
Road, Coventry

£1,295 Per Month

UP Estates



UP Estates





Property Address:  
Crossway Road,  
Coventry,  
CV3 6JP

## PROPERTY SUMMARY

\*\*\*AVAILABLE 2nd of AUGUST\*\*\* Up Estates are excited to bring this spacious and excellently presented three bedroom property, situated in the sought after Finham area. Boasting excellent work and school links, this property is a must-see! In brief the property comprises: Spacious open plan living room, conservatory, and kitchen with gifted appliances; both of which lead into the well presented and maintained garden. Heading upstairs sits the bathroom, with bath-shower combination, two spacious double rooms with internal storage, and single bedroom. \*\*\*CALL NOW TO VIEW\*\*\*



## CONTACT

Up Estates  
6 Orchard Court  
Binley Business Park  
Coventry  
Warwickshire  
CV3 2TQ

E: [lettings@upestates.co.uk](mailto:lettings@upestates.co.uk)  
T: 024 7771 0780  
[www.upestates.co.uk](http://www.upestates.co.uk)